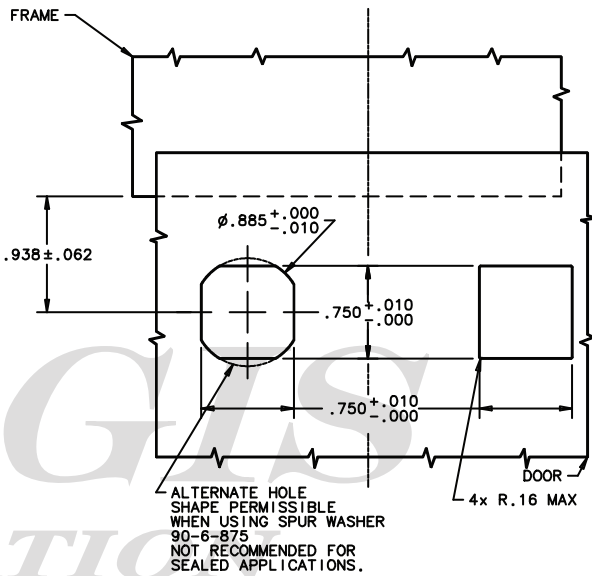
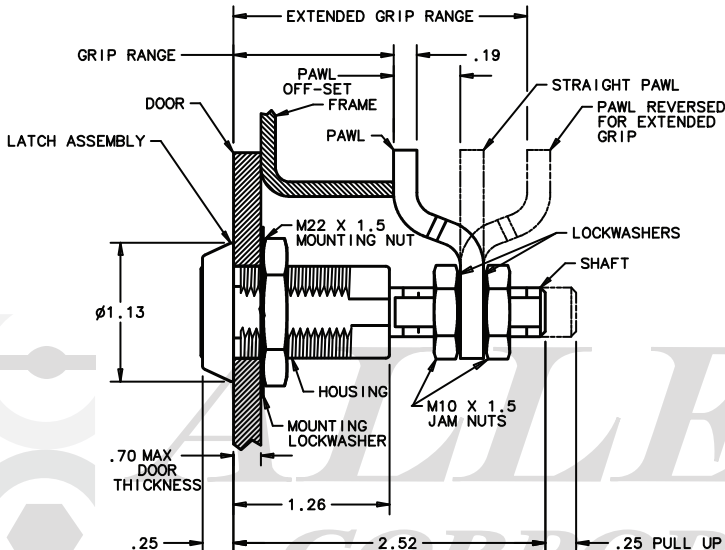
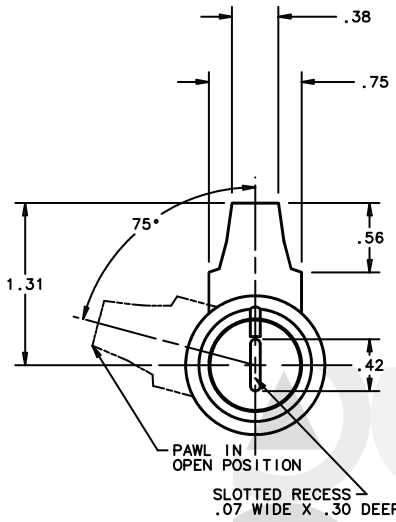


DOOR PREPARATION

METHOD A

METHOD B

(NOT RECOMMENDED FOR GASKETED APPLICATIONS)



Head Style	Part Number	Grip Range	
		Min.	Max.
	*E3-16-15	11.4 (.45")	27.2 (1.07")
	*E3-16-25	25.4 (1.00")	41.1 (1.62")
	E3-16-35	38.9 (1.53")	54.6 (2.15")
	*E3-115-15	11.4 (.45")	27.2 (1.07")
	*E3-115-25	25.4 (1.00")	41.1 (1.62")
	E3-115-35	38.9 (1.53")	54.6 (2.15")
	*E3-115-25	52.6 (2.07")	68.3 (2.89")
	*E3-115-15	66.3 (2.61")	76.2 (3.00")
	*E3-17-15	11.4 (.45")	27.2 (1.07")
	*E3-17-25	25.4 (1.00")	41.1 (1.62")
	*E3-17-35	38.9 (1.53")	54.6 (2.15")
	*E3-17-25	52.6 (2.07")	68.3 (2.89")
	*E3-17-15	66.3 (2.61")	76.2 (3.00")
	E3-19-15	11.4 (.45")	27.2 (1.07")
	E3-19-25	25.4 (1.00")	41.1 (1.62")
	E3-19-35	38.9 (1.53")	54.6 (2.15")
	E3-19-25	52.6 (2.07")	68.3 (2.89")
	E3-19-15	66.3 (2.61")	76.2 (3.00")

*The same pawl (curved forward or reversed) is supplied for both short and long grips.
 †† For intermediate grip, straight pawl is supplied.
 Locks keyed alike. Different key codes are available.

www.ALLEGISCORP.com 1-866-378-7550		MATERIAL / FINISH : Zinc Alloy w/ Black Powder Coat	
REV. : 1 : 1	DATE : 4-10-2018	DESCRIPTION : Vice Action Latch	DRAWING NO. : See Chart